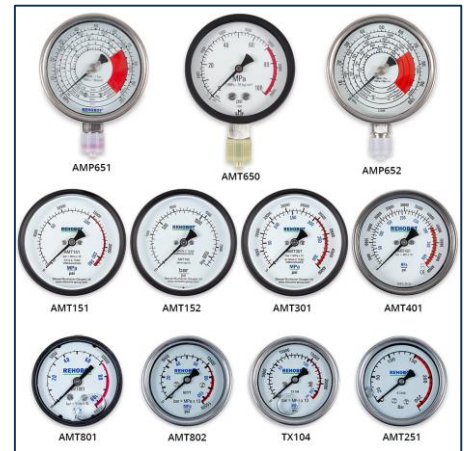


VASI supplies a large range of pressure gauges for our applications. Gauges permit an indication of the force and/or pressure generated by the hydraulic pump. This prevent accidental overload and contributes to prolong the life of your hydraulic equipment. Different models displaying MPa, psi, kN and ton

We can also supply custom made gauges with your own logo or special ranges.

VASI offers fluid-damped gauge models which are recommended if there is a risk of pressure surges.



Name	Item code	Class	Measuring range	Scale devisions	Thread	Seal
AMP651	19312	1.6	40kN, 100kN, 200kN, 70MPa, 10000psi	2kN, 10kN, 10kN, 2MPa, 500psi	G 1/2"	01044530
AMP652	22390	1.6	400kN, 600kN, 1000kN, 70MPa, 10000psi	20kN, 50kN, 50kN, 2MPa, 500psi	G 1/2"	01044530
AMT650	20069	1.6	100MPa, 14000 psi	2MPa, 500psi	G 1/2"	01044530
AMT151	45036	1	160 MPa, 23000 psi	5 MPa, 500psi	M20x1,5	01041940
AMT301	45037	1	310 MPa, 45000 psi	10 MPa, 1000 psi	M20x1,5	01041940
AMT401	51450	1	410 MPa, 60000 psi	10 MPa, 1000 psi	M20x1,5	01041940
AMT801	44474	1.6	100 MPa, 15000 psi	5 MPa, 1000 psi	G 1/4"	-
AMT802	50777	2.5	100 MPa, 15000 psi	5 MPa, 1000 psi	G 1/4"	-
AMZ50	21223	1.6	800 kN, 80 ton	20 kN	G 1/2"	01044530
AMZ250	42325	1.6	24 ton, 700 bar	1 ton, 20 bar	G 1/2"	01044530
TX102	38831300	1	4 ton, 10 ton, 600 bar	1 ton, 1 ton, 50 bar	G 3/8"	01044540
TX104	38831500	2.5	160 MPa, 20000 psi	5 MPa, 1000 psi	G 1/4"	-

Technical Documentation

Name	Number of scales	Measurement range	Scale division	Piston diameter mm	Piston area cm ²	A mm	B mm	C mm	D mm	E mm
AMP651	5	-40 kN	2 kN	30 45 65	7 16 33	G 1/2"	137	45	100	18
		-100 kN	10 kN							
		-200 kN	10 kN							
		-70 MPa	2 MPa							
		-10000 psi	500 psi							
AMP652	5	-400 kN	20 kN	90 110 140	64 95 154	G 1/2"	137	45	100	18
		-600 kN	50 kN							
		-1000 kN	50 kN							
		-70 MPa	2 MPa							
		-10000 psi	500 psi							
AMT650	2	-100 MPa	2 MPa			G 1/2"	137	45	100	18
		-14000 psi	500 psi							
AMT151	2	-160 MPa	5 MPa			M20x1,5	76,5	45	112	24
		-23000 psi	500 psi							
AMT301	2	-310 MPa	10 MPa			M20x1,5	76,5	45	112	24
		-45000 psi	1000 psi							
AMT801	2	-100 MPa	5 MPa			G 1/4"	50	28,5	60	15
		-15000 psi	1000 psi							
AMZ100	1	-1000 kN	50 kN	140	154	G 1/2"	137	45	100	18
AMZ50	2	-500 kN	20 kN	100	79	G 1/2"	137	45	100	18
		-50 ton								
AMZ150	2	-17 ton	1 ton	55	23,7	G 1/2"	137	45	100	18
		-700 bar	20 bar							
AMZ250	2	-24 ton	1 ton	65	33,1	G 1/2"	137	45	100	18
		-700 bar	20 bar							
TX102	3	-4 ton	1 ton	30 45	7 16	G 3/8"	130	45	100	18
		-10 ton	1 ton							
		-600 bar	50 bar							
TX103*	1	-160 MPa	5 MPa			G 1/4"	50	30	66	10,5
TX104*	2	-160 MPa	5 MPa			G 1/4"	50	30	62	9
		-20000 psi	1000 psi							

* TX103 & TX104 can be connected directly on standard hand pumps within the PHS-serien. Gauge adaptor not required!

