

CSF-cylinders have the same excellent characteristics as the CX range and are designed to compensate oblique loads better than conventional cylinders. All CSF cylinders are equipped with spring return, wiper and quick coupling.

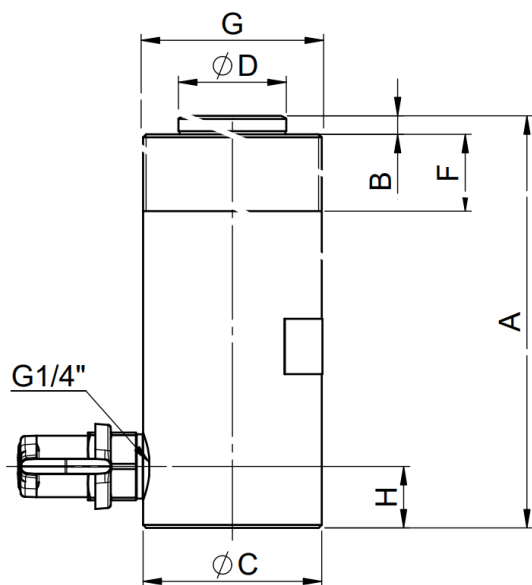
- 11 (13*) to 88 (100*) ton capacity and 25-200 mm stroke length.
- Manufactured in stainless steel with hard chromated piston.
- Collar mounting threads as standard.

Models in range CFS350 – CSF860 are equipped with carrying handles on the cylinder frame.



Name	Item code	Working press. MPa	Capacity kN (t)	Stroke mm	Stroke volume cm ³	Diameter mm	Height mm	Weight kg
CSF110-50	45092	80	127 (13)	50	80	58	134	2,2
CSF110-100	45094	80	127 (13)	100	159	58	184	3,0
CSF110-150	45096	80	127 (13)	150	238	58	234	3,5
CSF220-25	45098	80	249 (25)	25	78	80	115	3,7
CSF220-50	45100	80	249 (25)	50	156	80	140	4,3
CSF220-100	45102	80	249 (25)	100	312	80	190	5,5
CSF220-150	45104	80	249 (25)	150	467	80	240	6,9
CSF220-200	45106	80	249 (25)	200	623	80	290	8,2
CSF350A-50	45108	80	402 (41)	50	251	105	146	8,2
CSF350A-100	45110	80	402 (41)	100	502	105	196	10,2
CSF350A-200	45112	80	402 (41)	200	1005	105	296	15,6
CSF550A-50	45114	80	628 (64)	50	393	130	160	13,5
CSF550A-100	45116	80	628 (64)	100	785	130	210	16,7
CSF550A-200	45118	80	628 (64)	200	1570	130	310	23,6
CSF860A-50	45120	80	982 (100)	50	613	160	183	23,6
CSF860A-100	45122	80	982 (100)	100	1227	160	233	28,9
CSF860A-200	45124	80	982 (100)	200	2453	160	333	39,3

Single acting stainless steel push cylinders CSF



CSF860A-50, CRB/CRF100A-50



CSF350A-50, CRB/CRF40A-50

Modell / Model	Kapacitet / Capacity 70 MPa kN (t)	Kapacitet / Capacity 80 MPa kN (t)	Slaglängd / Stroke mm (in)	Kolvarea / Piston area cm ² (in ²)	Slagvolym / Stroke volume cm ³ (in ³)	Barhandtag / Carrying handle	A mm (in)	B mm (in)	C mm (in)	D mm (in)	F mm (in)	G mm (in)	H mm (in)	Vikt / Weight kg (lbs)
CSF110-50, CRB/CRF13-50	111 (11,3)	127 (13)	50 (2)	15,9 (2.5)	80 (4.9)	-	134 (5.3)	6 (0.2)	58 (2.3)	35 (1.4)	25 (1)	M58x2	20 (0.8)	2,2 (4.9)
CSF110-100, CRB/CRF13-100	111 (11,3)	127 (13)	100 (3.9)	15,9 (2.5)	159 (9.7)	-	184 (7.2)	6 (0.2)	58 (2.3)	35 (1.4)	25 (1)	M58x2	20 (0.8)	3,0 (6.6)
CSF110-150, CRB/CRF13-150	111 (11,3)	127 (13)	150 (5.9)	15,9 (2.5)	238 (14.5)	-	234 (9.2)	6 (0.2)	58 (2.3)	35 (1.4)	25 (1)	M58x2	20 (0.8)	3,5 (7.7)
CSF220-25, CRB/CRF25-25	218 (22)	249 (25)	25 (1)	31,2 (4.8)	78 (4.8)	-	115 (4.5)	7 (0.3)	80 (3.1)	52 (2)	30 (1.2)	M80x3	20 (0.8)	3,7 (8.2)
CSF220-50, CRB/CRF25-50	218 (22)	249 (25)	50 (2)	31,2 (4.8)	156 (9.5)	-	140 (5.5)	7 (0.3)	80 (3.1)	52 (2)	30 (1.2)	M80x3	20 (0.8)	4,3 (9.5)
CSF220-100, CRB/CRF25-100	218 (22)	249 (25)	100 (3.9)	31,2 (4.8)	312 (19)	-	190 (7.5)	7 (0.3)	80 (3.1)	52 (2)	30 (1.2)	M80x3	20 (0.8)	5,5 (12.1)
CSF220-150, CRB/CRF25-150	218 (22)	249 (25)	150 (5.9)	31,2 (4.8)	467 (28.5)	-	240 (9.4)	7 (0.3)	80 (3.1)	52 (2)	30 (1.2)	M80x3	20 (0.8)	6,9 (15.2)
CSF220-200, CRB/CRF25-200	218 (22)	249 (25)	200 (7.9)	31,2 (4.8)	623 (38)	-	290 (11.4)	7 (0.3)	80 (3.1)	52 (2)	30 (1.2)	M80x3	20 (0.8)	8,2 (18.1)
CSF350A-50, CRB/CRF40A-50	352 (36)	402 (41)	50 (2)	50,2 (4.8)	251 (15.3)	x	146 (5.7)	7 (0.3)	105 (4.1)	70 (2.8)	25 (1)	M105x3	20 (0.8)	8,2 (15.2)
CSF350A-100, CRB/CRF40A-100	352 (36)	402 (41)	100 (3.9)	50,2 (4.8)	502 (30.6)	x	196 (7.7)	7 (0.3)	105 (4.1)	70 (2.8)	25 (1)	M105x3	20 (0.8)	10,2 (22.5)
CSF350A-200, CRB/CRF40A-200	352 (36)	402 (41)	200 (7.9)	50,2 (4.8)	1005 (61.3)	x	296 (11.7)	7 (0.3)	105 (4.1)	70 (2.8)	25 (1)	M105x3	20 (0.8)	15,6 (34.4)
CSF550A-50, CRB/CRF63A-50	550 (56)	628 (64)	50 (2)	78,5 (12.2)	393 (24)	x	160 (6.3)	7 (0.3)	130 (5.1)	80 (3.1)	25 (1)	M130x3	23 (1.3)	13,5 (29.8)
CSF550A-100, CRB/CRF63A-100	550 (56)	628 (64)	100 (3.9)	78,5 (12.2)	785 (47.9)	x	210 (8.3)	7 (0.3)	130 (5.1)	80 (3.1)	25 (1)	M130x3	23 (1.3)	16,7 (36.8)
CSF550A-200, CRB/CRF63A-200	550 (56)	628 (64)	200 (7.9)	78,5 (12.2)	1570 (95.8)	x (x2)	310 (12.2)	7 (0.3)	130 (5.1)	80 (3.1)	25 (1)	M130x3	23 (1.3)	23,6 (52)
CSF860A-50, CRB/CRF100A-50	859 (88)	982 (100)	50 (2)	122,6 (19)	613 (37.4)	x (x2)	183 (7.2)	9 (0.4)	160 (6.3)	100 (3.9)	30 (1.2)	M160x3	35 (1.4)	23,6 (52)
CSF860A-100, CRB/CRF100A-100	859 (88)	982 (100)	100 (3.9)	122,6 (19)	1227 (74.9)	x (x2)	233 (9.2)	9 (0.4)	160 (6.3)	100 (3.9)	30 (1.2)	M160x3	35 (1.4)	28,9 (63.7)
CSF860A-200, CRB/CRF100A-200	859 (88)	982 (100)	200 (7.9)	122,6 (19)	2453 (149.7)	x (x2)	333 (13.1)	9 (0.4)	160 (6.3)	100 (3.9)	30 (1.2)	M160x3	35 (1.4)	39,3 (86.6)